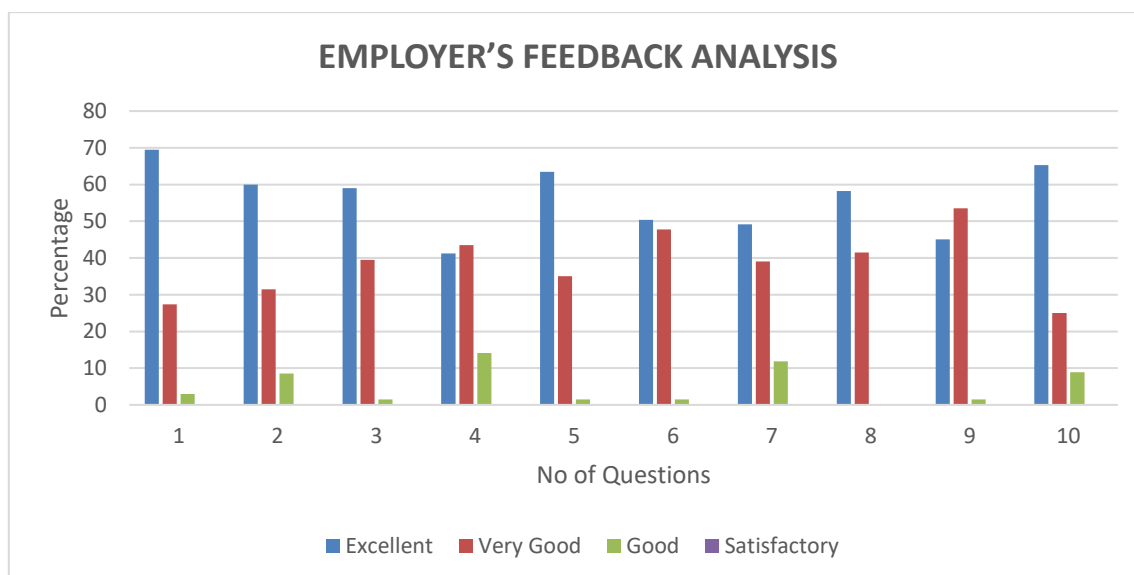


KLE Society's
Raja Lakhamagouda Science Institute (Autonomous), Belagavi
Feedback Analysis on Curriculum 2018-19
B.Sc.
EMPLOYER'S FEEDBACK ON CURRICULUM

Sl. No.	Questionnaire	Excellent (%)	Very Good (%)	Good (%)	Satisfactory (%)
1.	Adequacy of the curriculum	69.50	27.41	2.96	0.00
2.	Opportunity for developing skills in the curriculum	60	31.48	8.52	0.00
3.	Relevance of the course for providing employability	59	39.50	1.48	0.00
4.	Worth of syllabus in catering to the needs of industry/society	41.21	43.46	14.08	0.00
5.	Conduciveness of the syllabus for the student's readiness towards recruitment	63.50	35.00	1.48	0.00
6.	Provision of inculcating students' creativity in the curriculum	50.35	47.78	1.48	0.00
7.	Syllabus was relevant to practical /lab works.	49.13	39.01	11.85	0.00
8.	Syllabus helps in overall personality development.	58.25	41.50	0.00	0.00
9.	Syllabus enhances employability.	45.04	53.50	1.48	0.00
10.	Skill based content in syllabus.	65.33	25.00	8.89	0.00

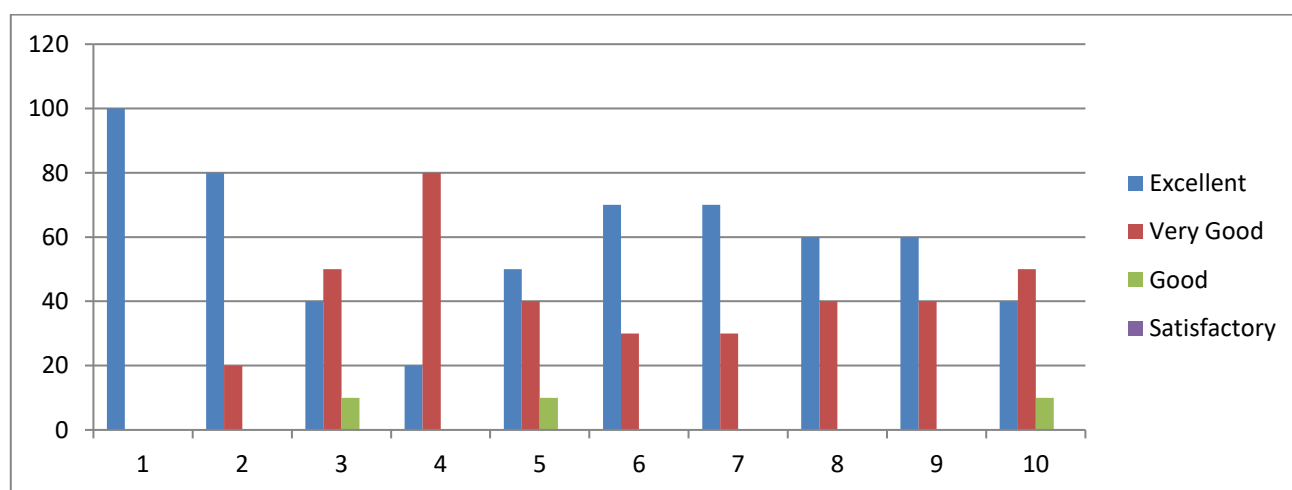


FEEDBACK ANALYSIS

On an average 58% of the employers are of the opinion that the syllabi are excellent giving scope for skill development, employability and overall personality development. An average of 48% of the employers feel that the Provision of inculcating students' creativity in the curriculum is very good

KLE Society's
Raja Lakhamagouda Science Institute (Autonomous), Belagavi
Feedback Analysis on Curriculum 2018-19
BCA
EMPLOYER'S FEEDBACK ON CURRICULUM

Sl. No.	Questionnaire	Excellent (%)	Very Good (%)	Good (%)	Satisfactory (%)
1.	Adequacy of the curriculum	100	0	0	0
2.	Opportunity for developing skills in the curriculum	80	20	0	0
3.	Relevance of the course for providing employability	40	50	10	0
4.	Worth of syllabus in catering to the needs of industry/society	20	80	0	0
5.	Conduciveness of the syllabus for the students readiness towards recruitment	50	40	10	0
6.	Provision of inculcating students creativity in the curriculum	70	30	0	0
7.	Syllabus was relevant to practical /lab works.	70	30	0	0
8.	Syllabus helps in overall personality development.	60	40	0	0
9.	Syllabus enhances employability.	60	40	0	0
10.	Skill based content in syllabus.	40	50	10	0

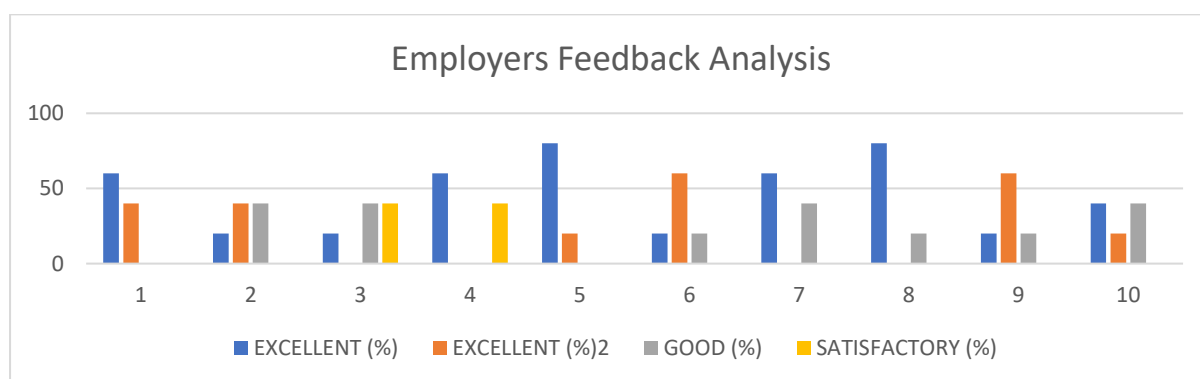


Feedback analysis:

On an average 20% of the employers are of the opinion that the worth of syllabus in catering to the needs of industry/society. An average of 50% of the employers feels that the conduciveness of the syllabus for the student's readiness towards recruitment is very good. On an average 50% of the employers are of the opinion that there is skill-based content in syllabus is very good.

KLE Society's
Raja Lakhamagouda Science Institute (Autonomous), Belagavi
Feedback Analysis on Curriculum 2018-19
MSc PHYSICS
EMPLOYER'S FEEDBACK ON CURRICULUM

Q.No.	QUESTIONNAIRES	EXCELLENT (%)	EXCELLENT (%)	GOOD (%)	SATISFACTORY (%)
1	Adequacy of the curriculum	60	40	0	0
2	Opportunity for developing skills in the curriculum	20	40	40	0
3	Relevance of the course for providing employability	20	0	40	40
4	Worth of syllabus in catering to the needs of industry/society	60	0	0	40
5	Conduciveness of the syllabus for the students' readiness towards recruitment	80	20	0	0
6	Provision of inculcating students' creativity in the curriculum	20	60	20	0
7	Syllabus was relevant to practical /lab works.	60	0	40	0
8	Syllabus helps in overall personality development.	80	0	20	0
9	Syllabus enhances employability.	20	60	20	0
10	Skill based content in syllabus.	40	20	40	0

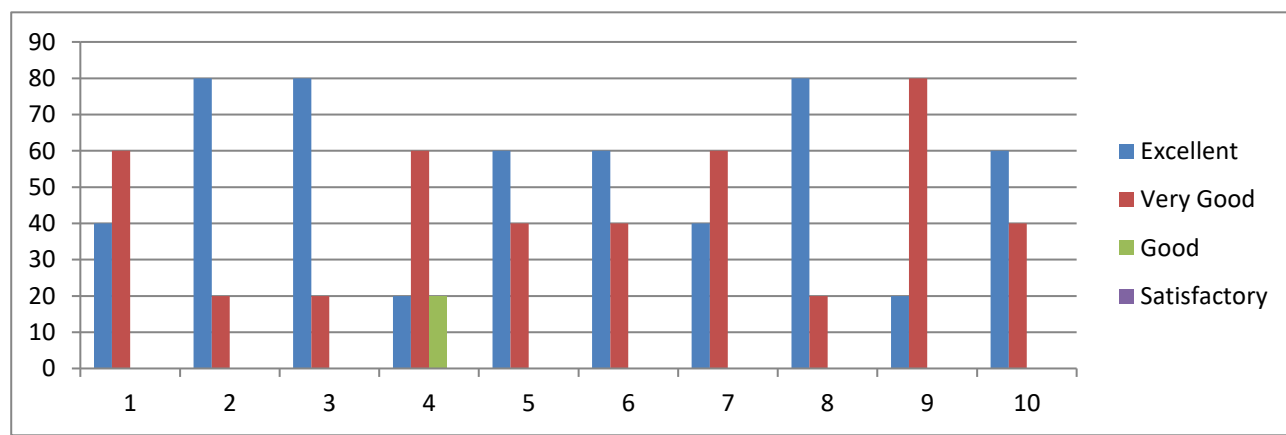


Feedback Analysis:

On an average 60% of the employers are of the opinion that the worth of syllabus in catering to the needs of industry/society. An average of 80% of the employers feels that the conduciveness of the syllabus for the student's readiness towards recruitment is very good. On an average 20% of the employers are of the opinion that there is skill-based content in syllabus is very good.

KLE Society's
Raja Lakhamagouda Science Institute (Autonomous), Belagavi
Feedback Analysis on Curriculum 2018-19
M.Sc. Mathematics
EMPLOYER'S FEEDBACK ON CURRICULUM

Q.No.	QUESTIONNAIRES	EXCELLENT (%)	VERY GOOD (%)	GOOD (%)	SATISFACTORY (%)
1	Adequacy of the curriculum	40	60	00	00
2	Opportunity for developing skills in the curriculum	80	20	00	00
3	Relevance of the course for providing employability	80	20	00	00
4	Worth of syllabus in catering to the needs of industry/society	20	60	20	00
5	Conduciveness of the syllabus for the students' readiness towards recruitment	60	40	00	00
6	Provision of inculcating students' creativity in the curriculum	60	40	00	00
7	Syllabus was relevant to practical /lab works.	40	60	00	00
8	Syllabus helps in overall personality development.	80	20	00	00
9	Syllabus enhances employability.	20	80	00	00
10	Skill based content in syllabus.	60	40	00	00



FEEDBACK ANALYSIS

On an average 54% of the employers are of the opinion that the syllabi are excellent giving scope for skill development, employability and overall personality development. An average of 44% of the employer feel that the conduciveness of the syllabus for the students readiness towards recruitment is very good.