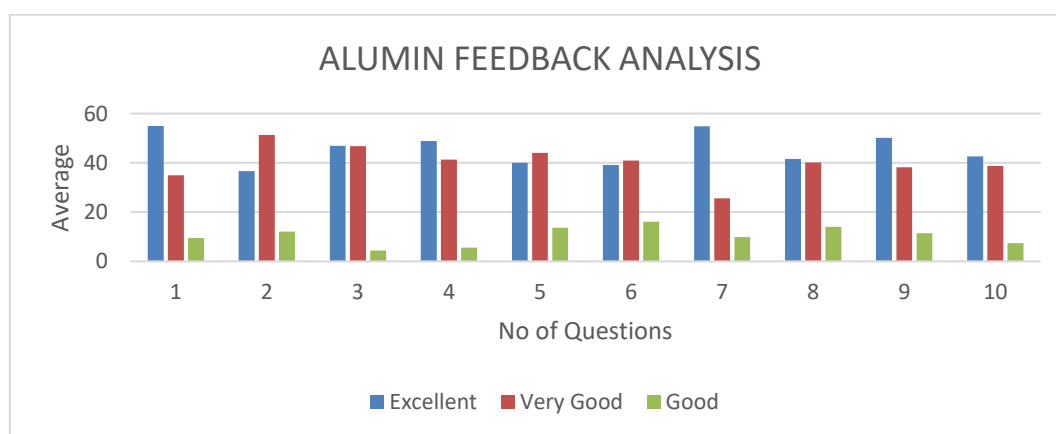


**KLE Society's**  
**Raja Lakhamagouda Science Institute (Autonomous), Belagavi**  
**Feedback Analysis on Curriculum 2018-19**  
**B.Sc**  
**ALUMNI'S FEEDBACK ON CURRICULUM:**

Sl. No.	Questionnaire	Excellent (%)	Very Good (%)	Good (%)	Satisfactory (%)
1.	Quality and relevance of the courses included in the curriculum	54.91	34.90	9.52	0.00
2.	The course you studied in relation to your current job	36.58	51.30	12.06	0.00
3.	Laboratory experiments in terms of their relevance	46.91	46.75	4.4	1.85
4.	Curriculum meets prerequisite and basic knowledge required for the career.	48.86	41.27	5.50	3.71
5.	Transparency in Evaluation Process	40.04	44.02	13.65	1.85
6.	Design of the courses (subjects) encourages /motivates extra learning or self-learning.	39.13	40.88	16.14	3.71
7.	Opportunity for developing skills in the curriculum	54.80	25.63	9.89	9.26
8.	Relevance of the course for providing employability	41.55	40.11	13.97	3.71
9.	Worth of syllabus in catering to the needs of industry/society	50.18	38.24	11.43	0.00
10.	Equipping the students for higher studies	42.65	38.73	7.35	11.11

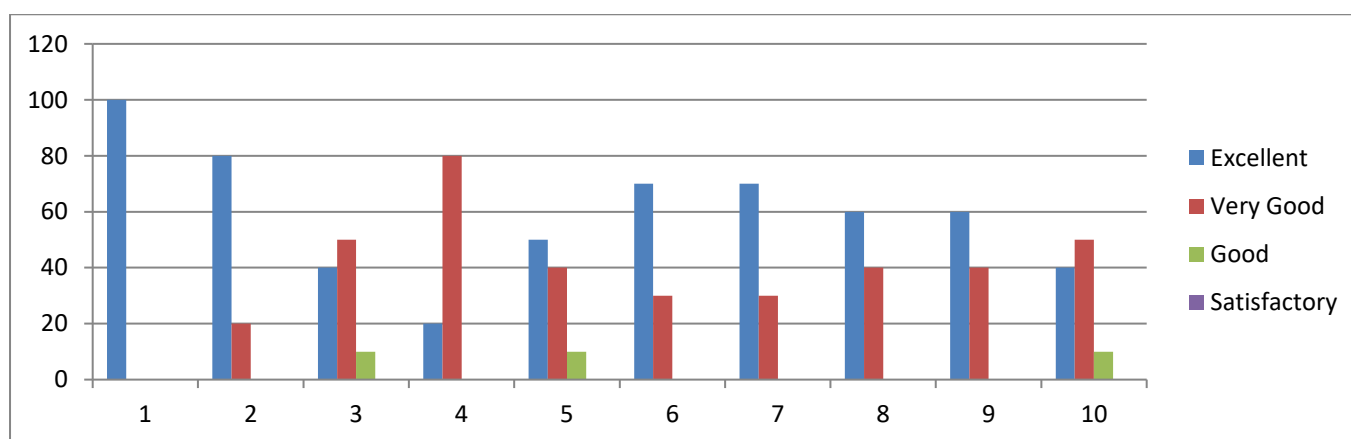


**FEEDBACK ANALYSIS**

On an average 54% of the alumni are of the opinion that the quality and relevance of the courses in the curriculum are excellent and provides opportunity for skill development and scope for self-learning and bear more relevance to their current job. An average of 47% of the alumni felt that the laboratory experiments in the curriculum and prerequisite and basic knowledge required for the career are very excellent. An average of 11% of the alumni feel that there is still scope for revising syllabus in line with needs of the industries and equipping students for higher studies.

**KLE Society's**  
**Raja Lakhamagouda Science Institute (Autonomous), Belagavi**  
**Feedback Analysis on Curriculum 2018-19**  
**BCA**  
**ALUMNI'S FEEDBACK ON CURRICULUM:**

Sl. No.	Questionnaire	Excellent (%)	Very Good (%)	Good (%)	Satisfactory (%)
1.	Quality and relevance of the courses included in the curriculum	100	0	0	0
2.	The course you studied in relation to your current job	80	20	0	0
3.	Laboratory experiments in terms of their relevance	40	50	10	0
4.	Curriculum meets prerequisite and basic knowledge required for the career.	20	80	0	0
5.	Transparency in Evaluation Process	50	40	10	0
6.	Design of the courses (subjects) encourages /motivates extra learning or self-learning.	70	30	0	0
7.	Opportunity for developing skills in the curriculum	70	30	0	0
8.	Relevance of the course for providing employability	60	40	0	0
9.	Worth of syllabus in catering to the needs of industry/society	60	40	0	0
10.	Equipping the students for higher studies	40	50	10	0



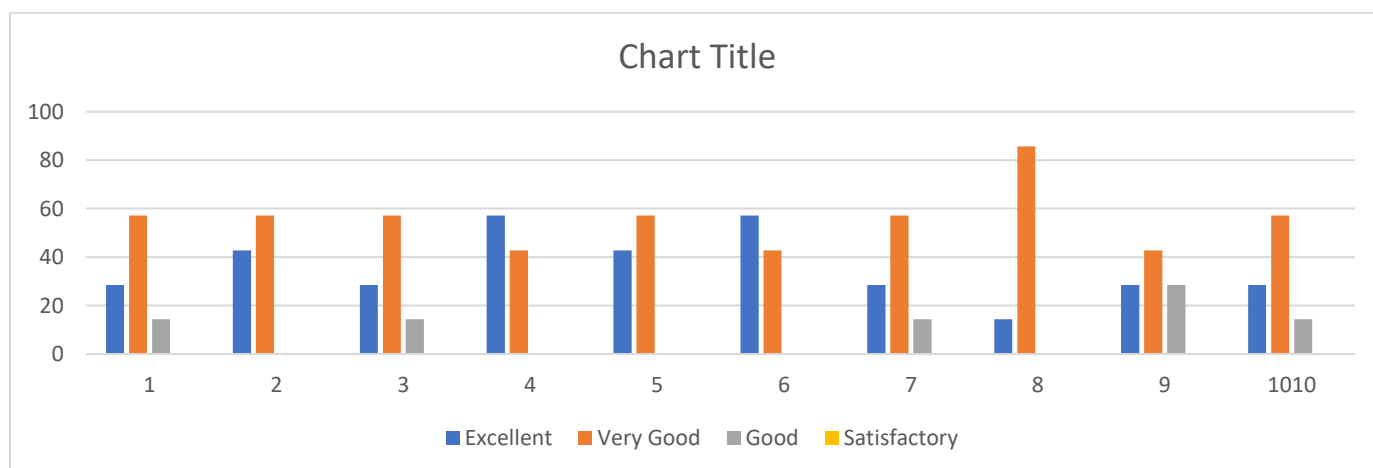
**Feedback Analysis:**

The Alumnus feedback was collected and analyzed. Around 55% of Alumni rated the curriculum as excellent and 38 % reported the curriculum to be very good. The curriculum was praised by the alumni for its content and adequateness.

**KLE Society's**  
**Raja Lakhamagouda Science Institute (Autonomous), Belagavi**  
**Feedback Analysis on Curriculum 2018-19**  
**MSc PHYSICS**

**Alumni's Feedback on Curriculum:**

Sl. No.	Questionnaire	Excellent (%)	Very Good (%)	Good (%)	Satisfactory (%)
1.	Quality and relevance of the courses included in the curriculum	28.5	57.1	14.28	0
2.	The course you studied in relation to your current job	42.8	57.1	0	0
3.	Laboratory experiments in terms of their relevance	28.5	57.1	14.28	0
4.	Curriculum meets prerequisite and basic knowledge required for the career.	57.1	42.8	0	0
5.	Transparency in Evaluation Process	42.8	57.1	0	0
6.	Design of the courses (subjects) encourages /motivates extra learning or self-learning.	57.1	42.8	0	0
7.	Opportunity for developing skills in the curriculum	28.5	57.1	14.28	0
8.	Relevance of the course for providing employability	14.28	85.7	0	0
9.	Worth of syllabus in catering to the needs of industry/society	28.5	42.8	28.5	0
10.	Equipping the students for higher studies	28.5	57.1	14.28	0

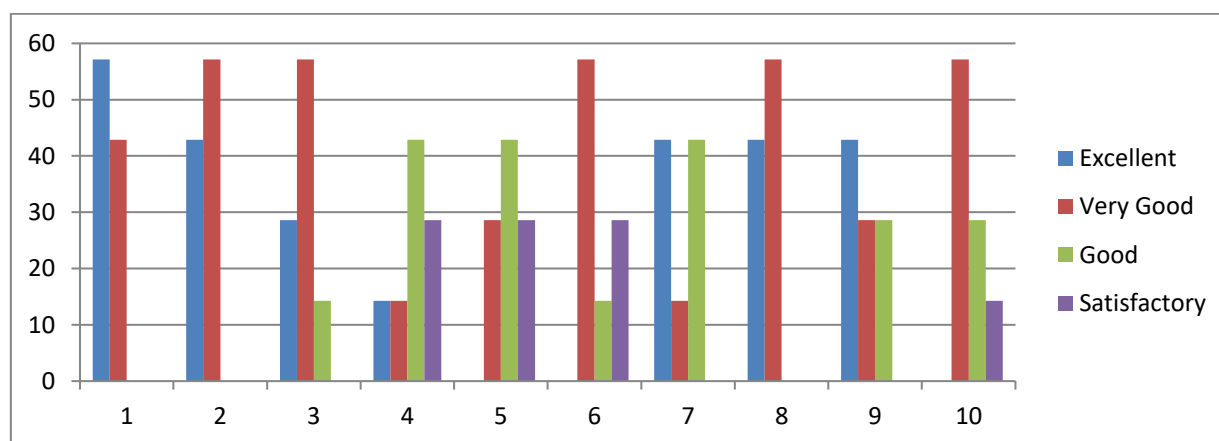


**Feedback Analysis**

The Alumnus feedback was collected and analyzed. Around 87.5% of Alumni rated the curriculum as excellent and 12.5 % reported the curriculum to be very good. The curriculum was praised by the alumni for its content and adequateness.

**KLE Society's**  
**Raja Lakhamagouda Science Institute (Autonomous), Belagavi**  
**Feedback Analysis on Curriculum 2018-19**  
**M.Sc. Mathematics**  
**ALUMNI'S FEEDBACK ON CURRICULUM**

Q.NO.	QUESTIONNAIRES	EXCELLENT (%)	VERY GOOD (%)	GOOD (%)	SATISFACTORY (%)
1	Quality and relevance of the courses included in the curriculum	57.14	42.85	00	00
2	The course you studied in relation to your current job	42.85	57.14	00	00
3	Laboratory experiments in terms of their relevance	28.57	57.14	14.28	00
4	Curriculum meets prerequisite and basic knowledge required for the career.	14.28	14.28	42.85	28.57
5	Transparency in Evaluation Process	00	28.57	42.85	28.57
6	Design of the courses (subjects) encourages /motivates extra learning or self-learning.	00	57.14	14.28	28.57
7	Opportunity for developing skills in the curriculum	42.85	14.28	42.85	00
8	Relevance of the course for providing employability	42.85	57.14	00	00
9	Worth of syllabus in catering to the needs of industry/society	42.85	28.57	28.57	00
10	Equipping the students for higher studies	00	57.14	28.57	14.28



### Feedback Analysis

On an average 57% of the alumni are of the opinion that the quality and relevance of the courses in the curriculum are excellent and provides opportunity for skill development and scope for self-learning and bear more relevance to their current job. An average of 57% of the alumni felt that the laboratory experiments in the curriculum and prerequisite and basic knowledge required for the career are very good. An average of 14% of the alumni feel that there is still scope for revising syllabus in line with needs of the industries and equipping students for higher studies.